



Costs Import/Export

Table of Contents

1. Introduction.....	2
2. Pre-requisites.....	2
3. Step-by-step details.....	2
a. Basics.....	2
i. Access the parameters section in the GenMix application.....	2
ii. Click on the costs section in the menu:	2
iii. Enter the costs	2
iv. Click on the Import/Export button, a small window will popup asking the user to either Import or Export the costs.....	2
v. Click on Export to export the costs	3
vi. Choose the format of the file to export	3
vii. Click on save	3
viii. Once the file has been exported, you can import it again by clicking on the import button in the window which was opened in iv above.	3
4. Creating or modifying your own CSV file (Advanced User).....	4
a. CSV file format:	4
5. Important Notes	4
6. Contact information	4



1. Introduction

The Parameters section of the GenMix Pro application allows the user to manage the software. By clicking on costs, the user will be able to import and export the costs, which were saved in the database, and modify them to import again on other computers where the GenMix Pro has been installed. Moreover, the costs section, allows the user to input his own costs in CSV (Comma-Separated Values) format.

2. Pre-requisites

No prerequisites are required to perform a simple Import/Export in the .GP or .CSV format. Nonetheless, to modify the costs or import his own costs the user must have basic knowledge in Microsoft Excel (Or any other alternative: Google Drive, Google Sheets, Apache OpenOffice, Zoho Sheet, Excel Online, LibreOffice....).

For more information about the CSV file format, refer to the following link:

<http://www.computerhope.com/issues/ch001356.htm>

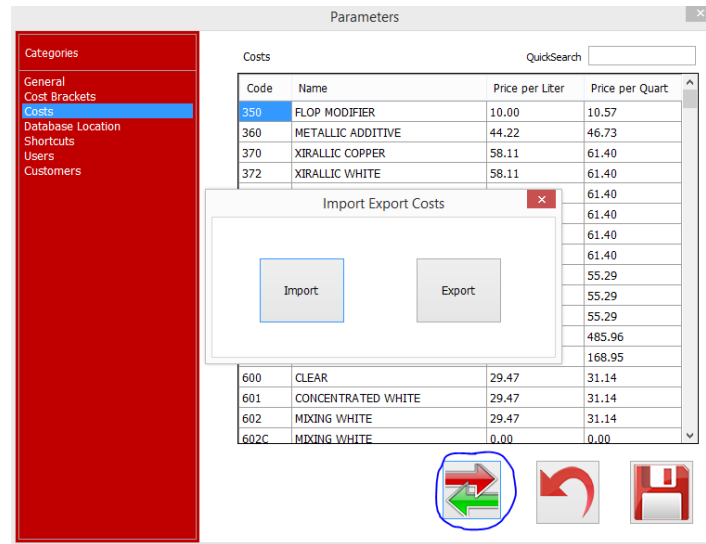
3. Step-by-step details

a. Basics

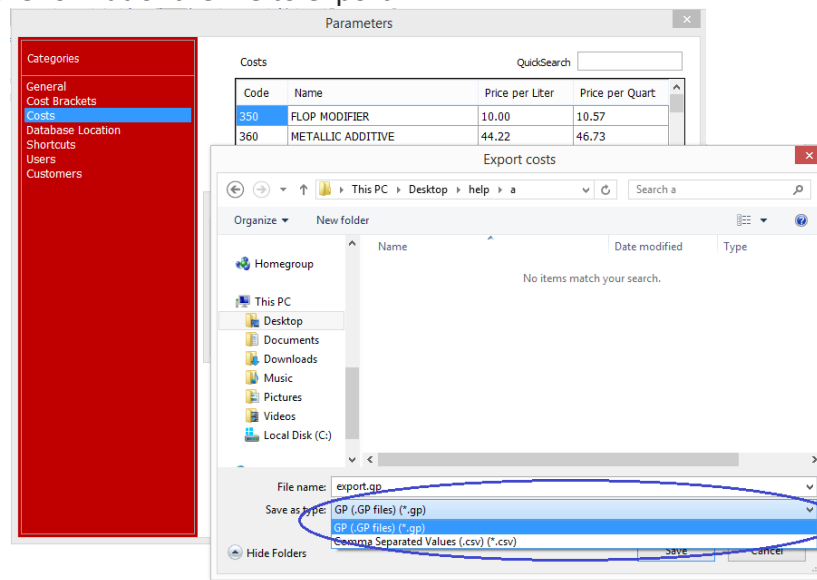
- i. Access the parameters section in the GenMix application
- ii. Click on the costs section in the menu:

Code	Name	Price per Liter	Price per Quart
350	FLOP MODIFIER	10.00	10.57
360	METALLIC ADDITIVE	44.22	46.73
370	XIRALLIC COPPER	58.11	61.40
372	XIRALLIC WHITE	58.11	61.40
373	XIRALLIC GOLD	58.11	61.40
375	XIRALLIC RED	58.11	61.40
377	XIRALLIC GREEN	58.11	61.40
378	XIRALLIC BLUE	58.11	61.40
394	SILVER DOLLAR COARSE	52.32	55.29
395	SILVER DOLLAR EXTRA FINE	52.32	55.29
398	SILVER DOLLAR FINE	52.32	55.29
574	MYSTIC VIOLET	459.89	485.96
599	METALLITE ALUMINUM	159.89	168.95
600	CLEAR	29.47	31.14
601	CONCENTRATED WHITE	29.47	31.14
602	MIXING WHITE	29.47	31.14
602C	MIXING WHITE	0.00	0.00

- iii. Enter the costs
- iv. Click on the Import/Export button, a small window will popup asking the user to either Import or Export the costs.



- v. Click on Export to export the costs
- vi. Choose the format of the file to export



- vii. Click on save
- viii. Once the file has been exported, you can import it again by clicking on the import button in the window which was opened in iv above.



4. Creating or modifying your own CSV file (Advanced User)

- a. CSV file format:

The CSV file should have the following format:

Product code, price per liter, price per quart

IMPORTANT NOTES:

The cells (Product code...) should not be placed between quotation marks

To enter the price per liters only or per quarts only, the columns should be emptied and not deleted

Every product should be entered on a new line.

Examples:

Enter the price per quarts only for product 300:

300,,20

Enter the price per liters only for product 300:

300,20,

The application will automatically recalculate the missing price afterwards

5. Important Notes

Any links referred in the document are not permanent. If the link cannot be access, please contact our support team.

6. Contact information

For more information or comments, please do not hesitate to contact the General Paint GenMix support team by email at: support.it@generalpaint.biz

or by phone at: +961 9 925 990

We are available from 8:00AM (GMT) to 8:00PM (GMT).